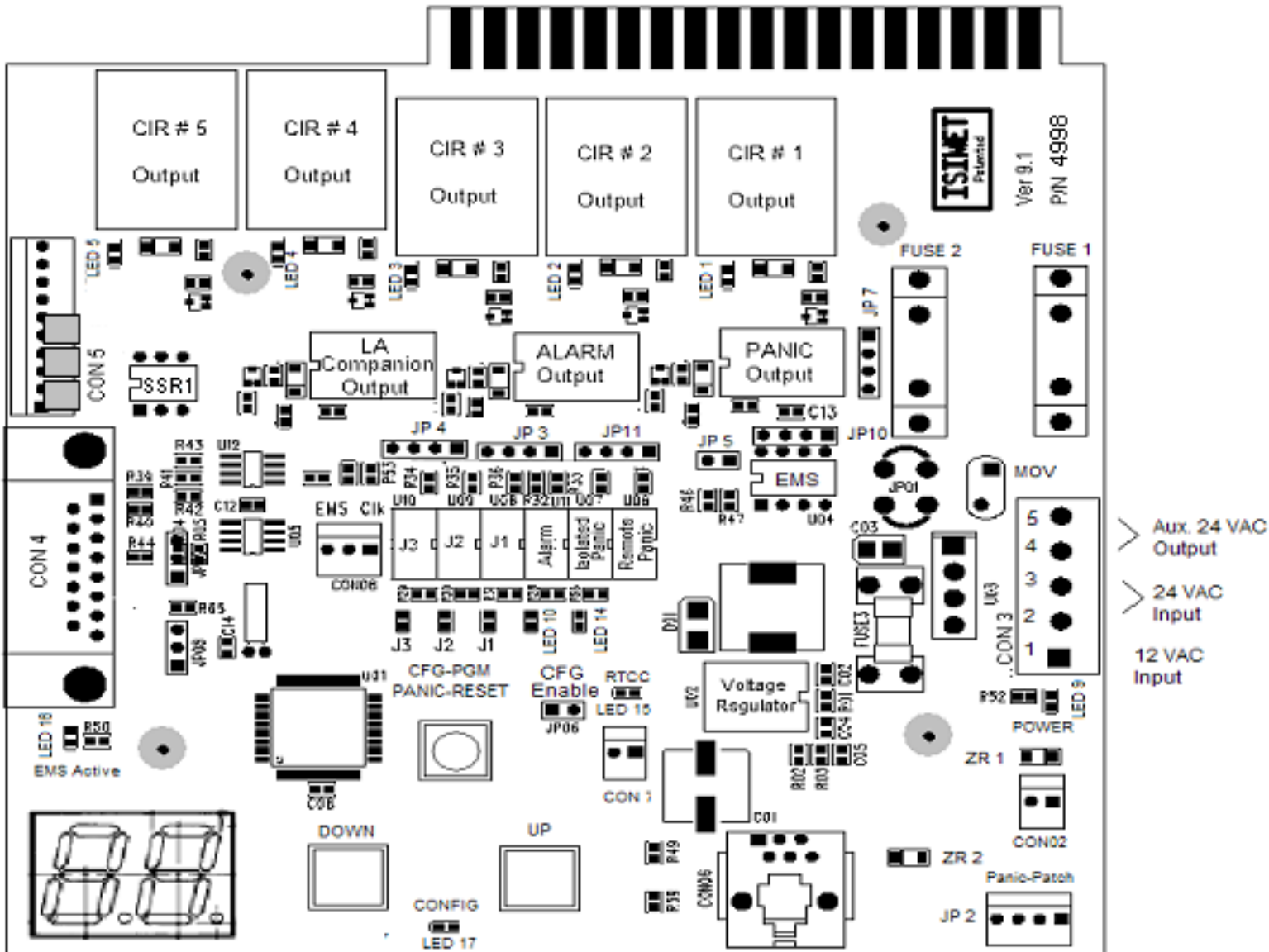


Version 9.1 pcb Jumper Configurations



Jumper Post – Connection Configuration

| | | |
|-------|---|--|
| CON 2 | Aux. 5 VDC Output | (Use only by Written Instruction) Caution: DO NOT Place a Jumper Across any Pins on this Connector. |
| JP 8 | Panel Switch # 4 Option | Center – Lower Jumper: NO Switch 4 Available Upper – Center Jumper: Switch 4 Active |
| JP 9 | Switch # 4 LED Option | Center – Lower Jumper: NO Switch 4 LED Upper – Center Jumper: Switch 4 LED |
| JP 5 | EMS Input | Place Jumper Only When Input is 5 VDC; Otherwise Remove Jumper |
| CON 5 | LS series RF Input (optional) Standard config. | Ten pin connector permits RF Input Module to be integrated into the unit. Jumpers across pins 5 & 6; 7 & 8; 9 & 10 |
| CON 8 | EMS Clk | Right – Center Jumper: Factory installed to allow temporary operation during Testing and Start-up. Remove Jumper and see Programming Configuration Notes once Unit Start-up is Certified. |
| JP 2 | Panic-Patch Standard config. | Used in Cases when Transient Voltage Causes Interference from a Connected Remote Panic. Use only with Factory Provided <u>PATCH</u> Module. Two Jumpers in Place. Do Not Remove unless <u>PATCH</u> Module is Used. |
| DS 1 | Programming Display | Digital Display Illuminates only when Unit is in Program Configuration Mode. See pages 21 and 22 for Programming Instructions. |
| JP 7 | Panic Output | 1 – jumper placed, center posts only- dry contact config. (Standard) 2 – jumper placement @ outer pins – 24 vac output config. |
| JP 6 | CFG Enable | Placing a Jumper Across Pins enables Programming Configuration. |
| JP 3 | Input Config. | Fuel Gas Detector |
| JP 4 | Input Config. | LA Input/Fuel Gas Sensor (per Code Pos. 10 config.) |
| JP 10 | Input Config. | Energy Management |
| JP 11 | Input Config. | Alarm |
| CON 2 | LED Output | Output for RED LED @ Circuit 4 Door Panel (if Unit includes Circuit 4) |
| CON 7 | RTCC Output | Use by Factory Instructions only. |
| CON 6 | Program Plug | Factory Use only. Do NOT make any connection to this Plug. |

JP 3; JP 4; JP 10; JP 11; JP12 Jumper Configurations: Placing a jumper on the two center pins establishes the inputs as 24 vac. Placing two jumpers across the four pins allows for a dry-contact type input.

CAUTION: Care should be taken to verify proper jumper configuration prior to making any connections to input posts. Improper input configuration will result in damage to the circuit board and may void the warranty.